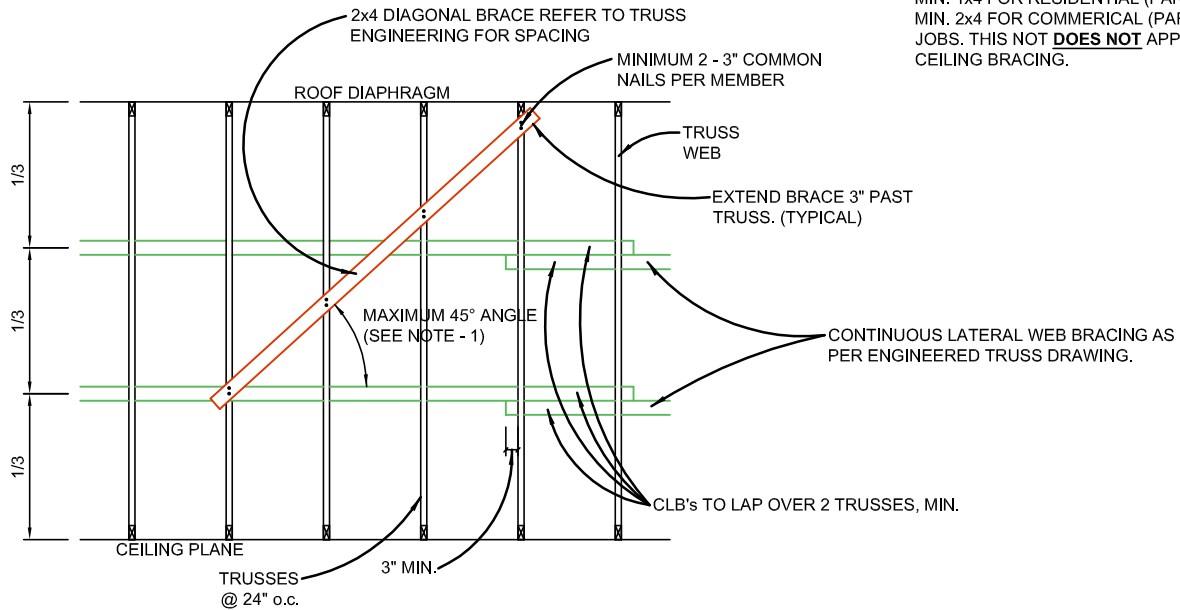


**NOTES:**

1. EXTEND DIAGONAL BRACE OVER ADDITIONAL TRUSSES TO MAINTAIN A MAXIMUM 45 DEGREE ANGLE.

2. CLB'S AND DIAGONAL BRACES TO BE MIN. 1x4 FOR RESIDENTIAL (PART 9) AND MIN. 2x4 FOR COMMERCIAL (PART 4) JOBS. THIS NOT **DOES NOT** APPLY TO CEILING BRACING.



## LONGITUDINAL WEB BRACE ANCHORING DETAIL

NOT TO SCALE