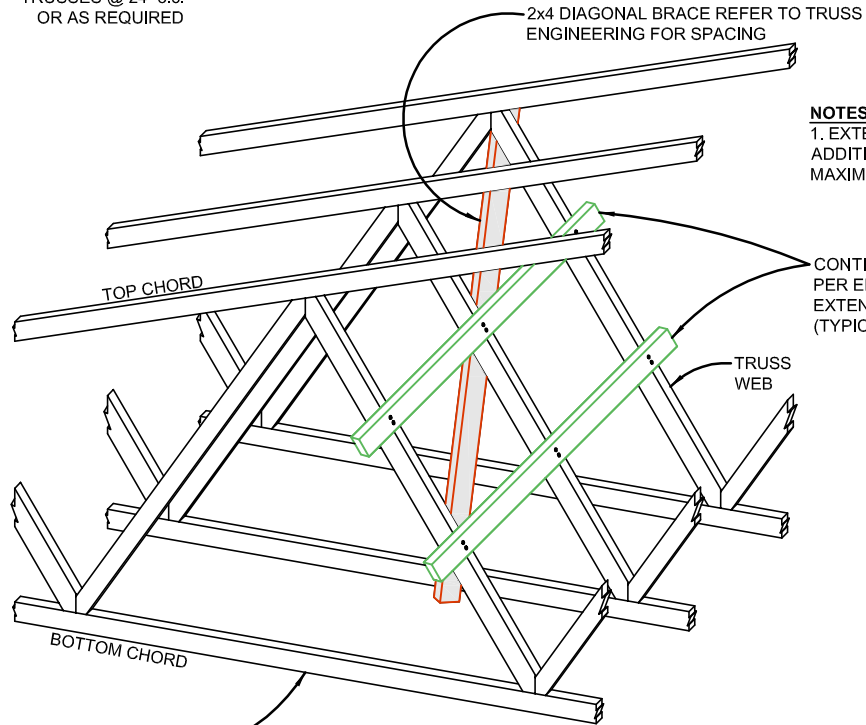


TRUSSES @ 24" o.c.
OR AS REQUIRED



NOTES:

1. EXTEND DIAGONAL BRACE OVER ADDITIONAL TRUSSES TO MAINTAIN A MAXIMUM 45 DEGREE ANGLE.

TRUSSES @ 24" o.c.
OR AS REQUIRED

LONGITUDINAL WEB BRACE ANCHORING 3D DETAIL

NOT TO SCALE